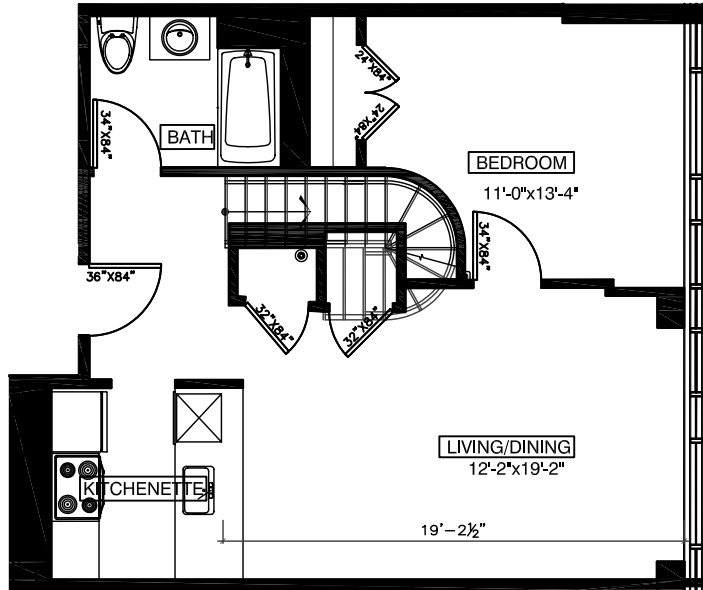
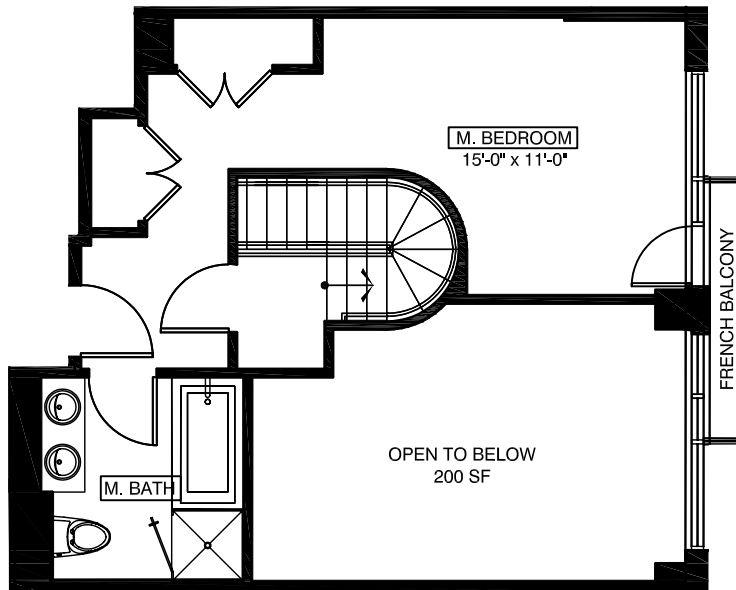


65 AINSLIE STREET BROOKLYN, NEW YORK

202
2 BEDROOMS
2 BATHROOMS



1ST FLOOR



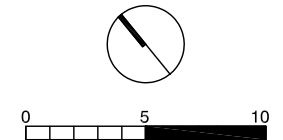
2ND FLOOR

FLOOR NUMBER	APARTMENT AREA
2	657 SQ.FT.
3	409 SQ.FT.
TOTAL	1066 SQ.FT.

AREA OF BALCONIES
 13 SQ. FT.
 AREA OF TERRACES
 0 SQ. FT.

All dimensions are approximate and subject to normal construction variances and tolerances. Dimensions are maximum overall, subtract cut-outs

We reserve the right to make changes due to unforeseen conditions, in accordance with the offering plan



Area calculations are taken from the exterior of exterior walls and to the center of demising walls.

KEY PLAN

