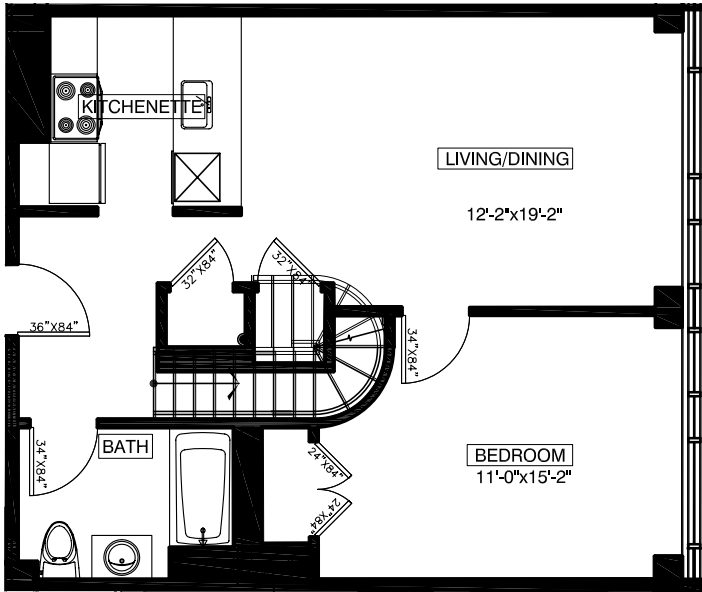


65 AINSLIE STREET BROOKLYN, NEW YORK

203
2 BEDROOMS
2 BATHROOMS



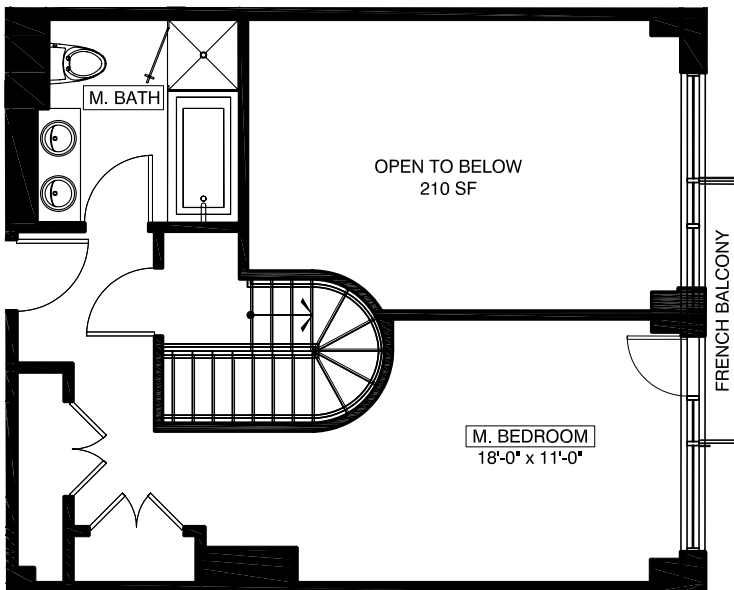
2ND FLOOR

FLOOR NUMBER	APARTMENT AREA
2	694 SQ.FT.
3	436 SQ.FT.
TOTAL	1130 SQ.FT.

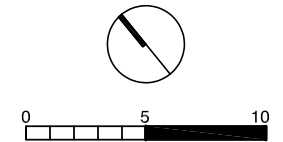
AREA OF BALCONIES
 13 SQ. FT.
 AREA OF TERRACES
 0 SQ. FT.

All dimensions are approximate and subject to normal construction variances and tolerances. Dimensions are maximum overall, subtract cut-outs

We reserve the right to make changes due to unforeseen conditions, in accordance with the offering plan



3RD FLOOR



Area calculations are taken from the exterior of exterior walls and to the center of demising walls.

KEY PLAN

