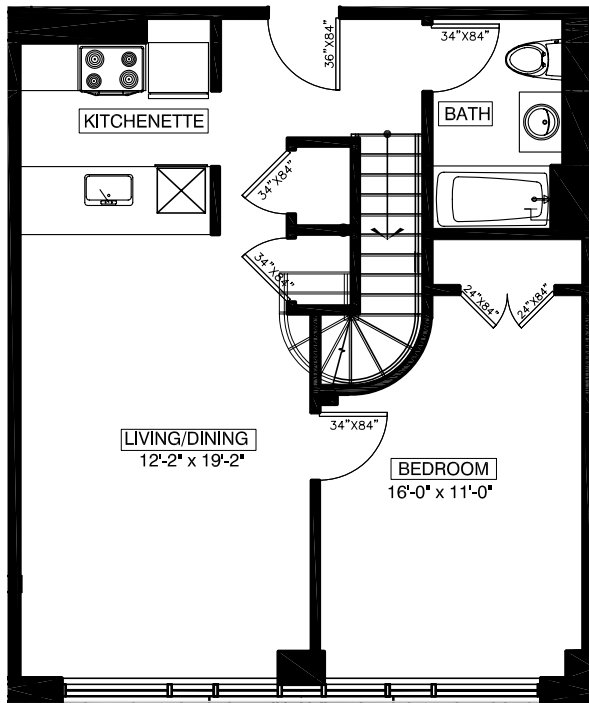


# 65 AINSLIE STREET BROOKLYN, NEW YORK

**207**  
**2 BEDROOMS**  
**2 BATHROOMS**



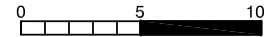
1ST FLOOR

FLOOR NUMBER	APARTMENT AREA
2	690 SQ.FT.
3	438 SQ.FT.
<b>TOTAL</b>	<b>1128 SQ.FT.</b>

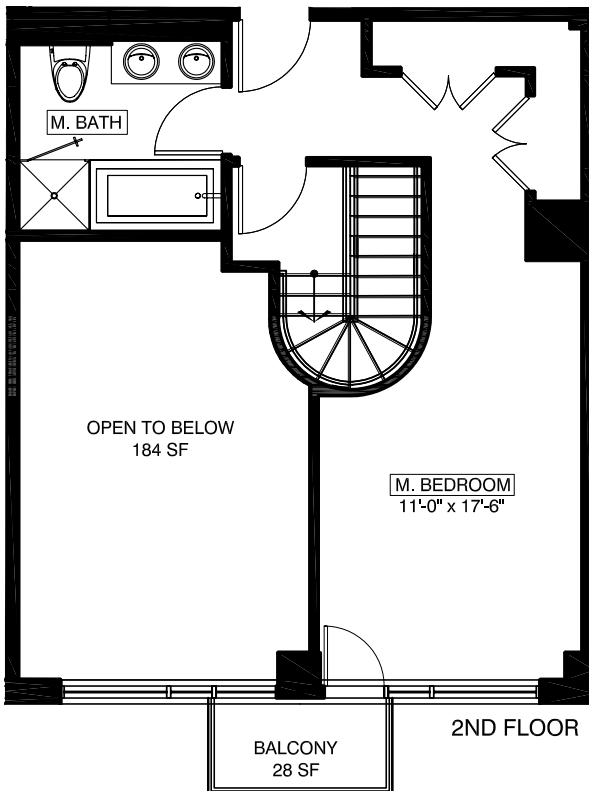
AREA OF BALCONIES  
 28 SQ. FT.  
 AREA OF TERRACES  
 0 SQ. FT.

All dimensions are approximate and subject to normal construction variances and tolerances. Dimensions are maximum overall, subtract cut-outs

We reserve the right to make changes due to unforeseen conditions, in accordance with the offering plan



Area calculations are taken from the exterior of exterior walls and to the center of demising walls.



2ND FLOOR

KEY PLAN

