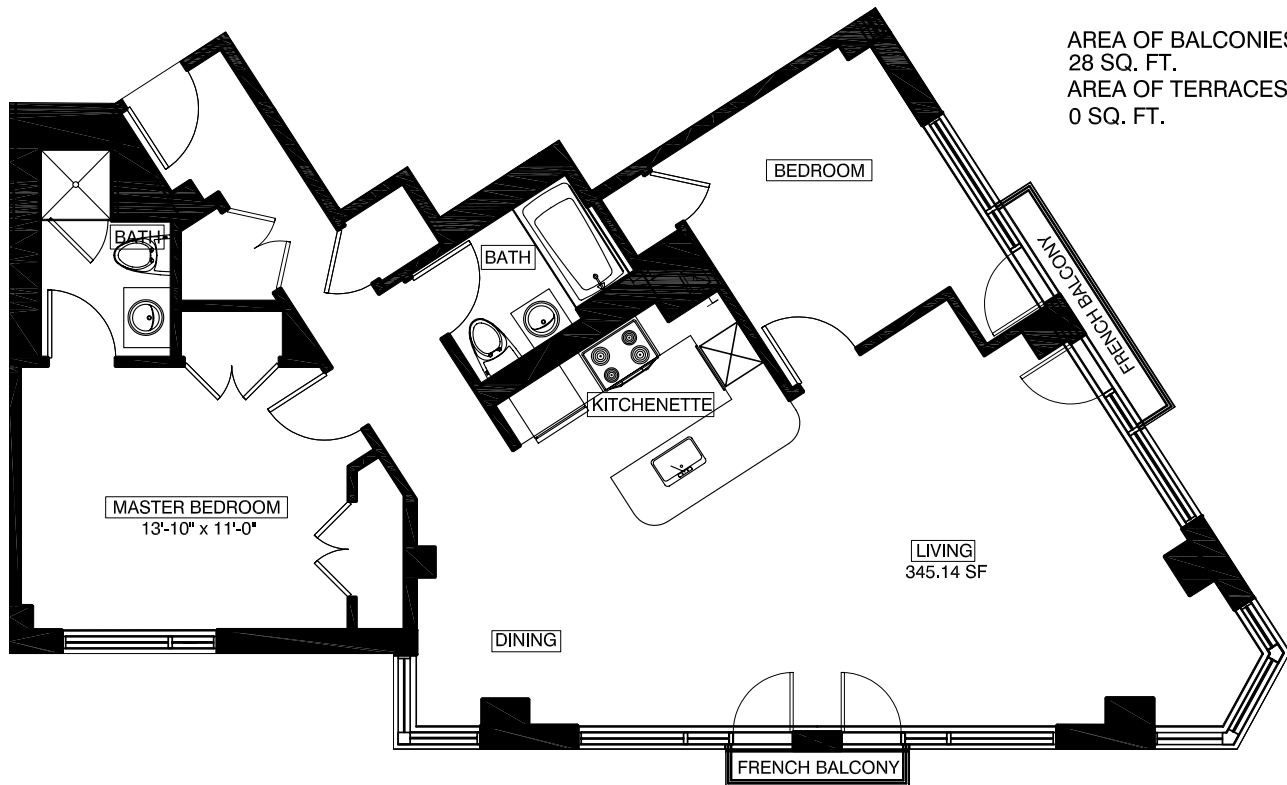


65 AINSLIE STREET BROOKLYN, NEW YORK

305
2 BEDROOMS
2 BATHROOMS

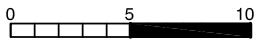
| | |
|-----------------|-------------------|
| FLOOR NUMBER | APARTMENT AREA |
| 3 | 1152 SQ.FT. |

AREA OF BALCONIES
28 SQ. FT.
AREA OF TERRACES
0 SQ. FT.



All dimensions are approximate and subject to normal construction variances and tolerances. Dimensions are maximum overall, subtract cut-outs

We reserve the right to make changes due to unforeseen conditions, in accordance with the offering plan



Area calculations are taken from the exterior of exterior walls and to the center of demising walls.

KEY PLAN

