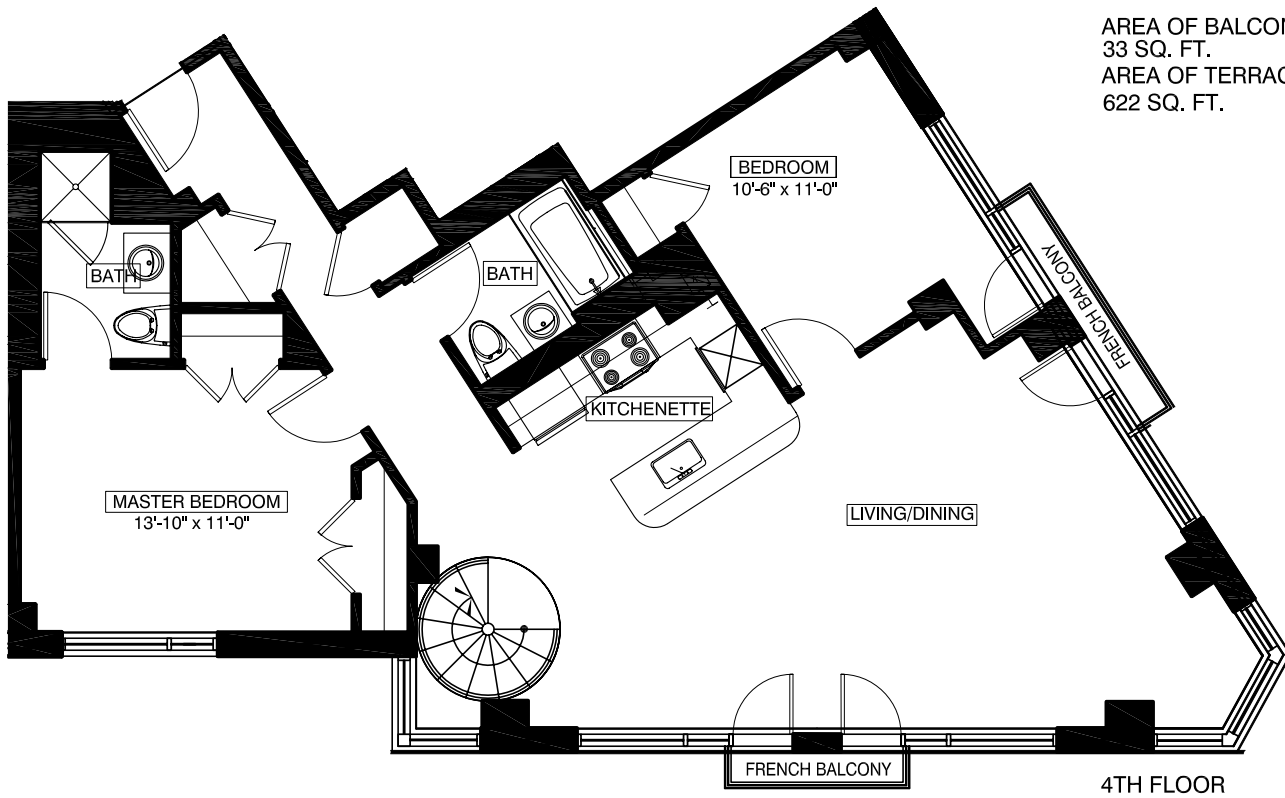


65 AINSLIE STREET BROOKLYN, NEW YORK

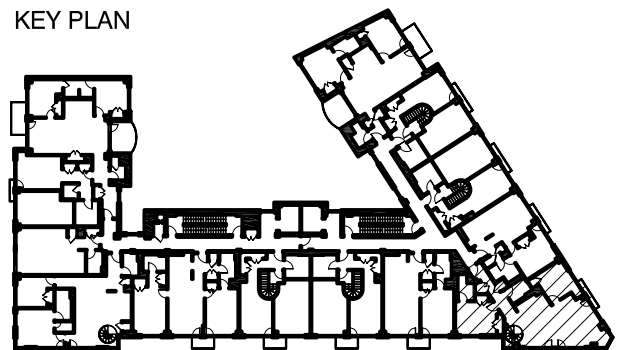
505
2 BEDROOMS
2 BATHROOMS
ATTIC

FLOOR NUMBER	APARTMENT AREA
5	1152
ATTIC	670 SQ.FT.
TOTAL	1822 SQ.FT.

AREA OF BALCONIES
 33 SQ. FT.
 AREA OF TERRACES
 622 SQ. FT.

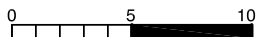


KEY PLAN



All dimensions are approximate and subject to normal construction variances and tolerances. Dimensions are maximum overall, subtract cut-outs

We reserve the right to make changes due to unforeseen conditions, in accordance with the offering plan



Area calculations are taken from the exterior of exterior walls and to the center of demising walls.