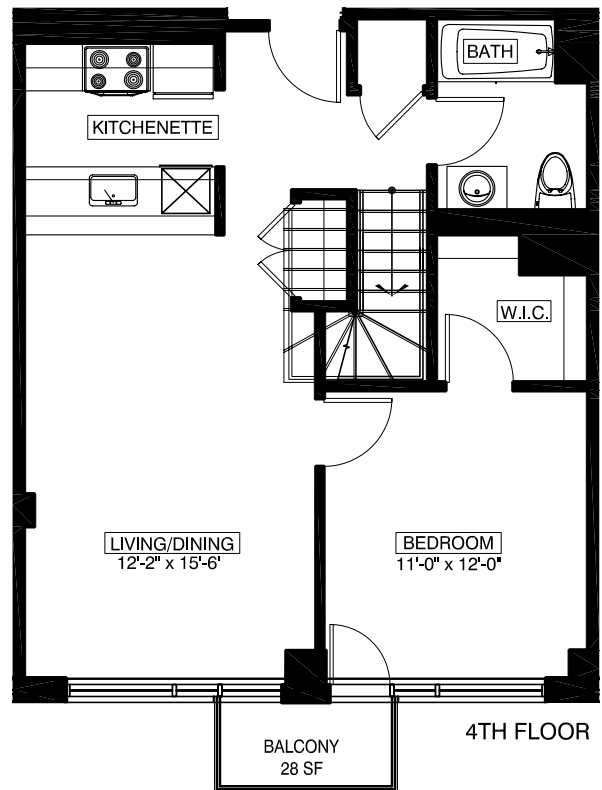
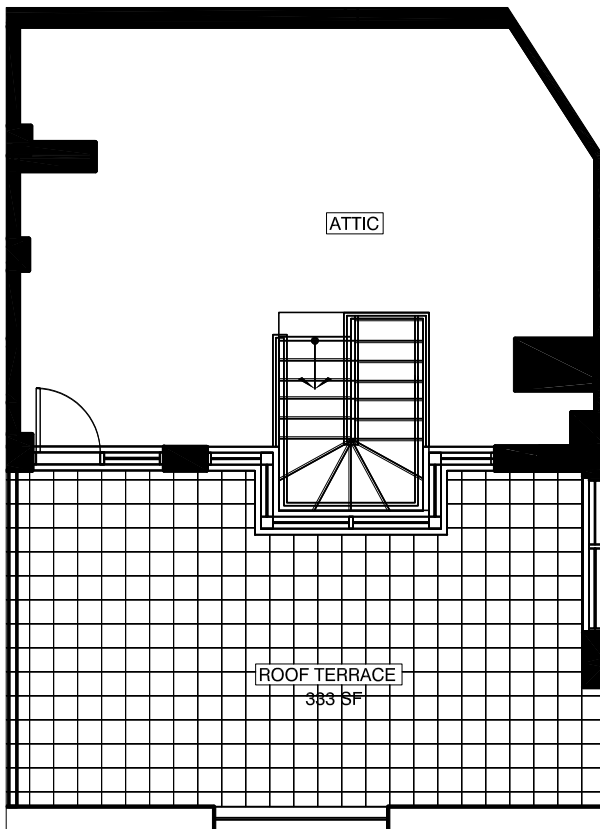


65 AINSLIE STREET BROOKLYN, NEW YORK

506
1 BEDROOM
1 BATHROOM

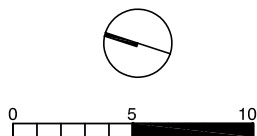
AREA OF BALCONIES
28 SQ. FT.
AREA OF TERRACES
333 SQ. FT.

FLOOR NUMBER	APARTMENT AREA
5	688 SQ.FT.
ATTIC	434 SQ.FT.
TOTAL	1122 SQ.FT.



All dimensions are approximate and subject to normal construction variances and tolerances. Dimensions are maximum overall, subtract cut-outs

We reserve the right to make changes due to unforeseen conditions, in accordance with the offering plan



Area calculations are taken from the exterior of exterior walls and to the center of demising walls.

