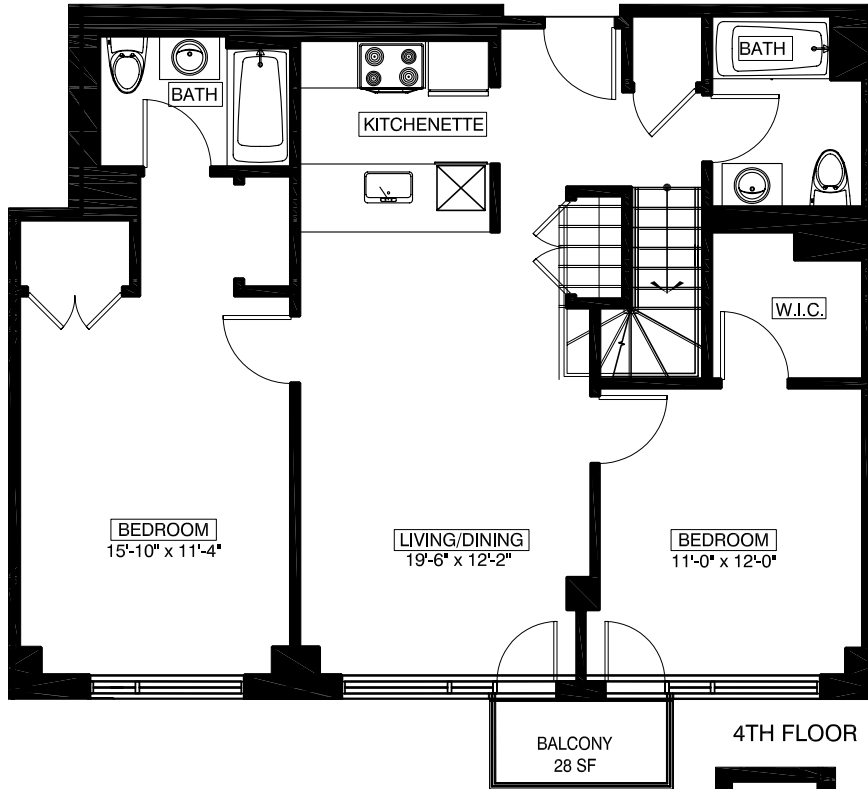


65 AINSLIE STREET BROOKLYN, NEW YORK

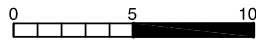
509
2 BEDROOMS
2 BATHROOMS
ATTIC

FLOOR NUMBER	APARTMENT AREA
5	995 SQ.FT.
ATTIC	645 SQ.FT.
TOTAL	1640 SQ.FT.

AREA OF BALCONIES
 28 SQ. FT.
 AREA OF TERRACES
 306 SQ. FT.



4TH FLOOR

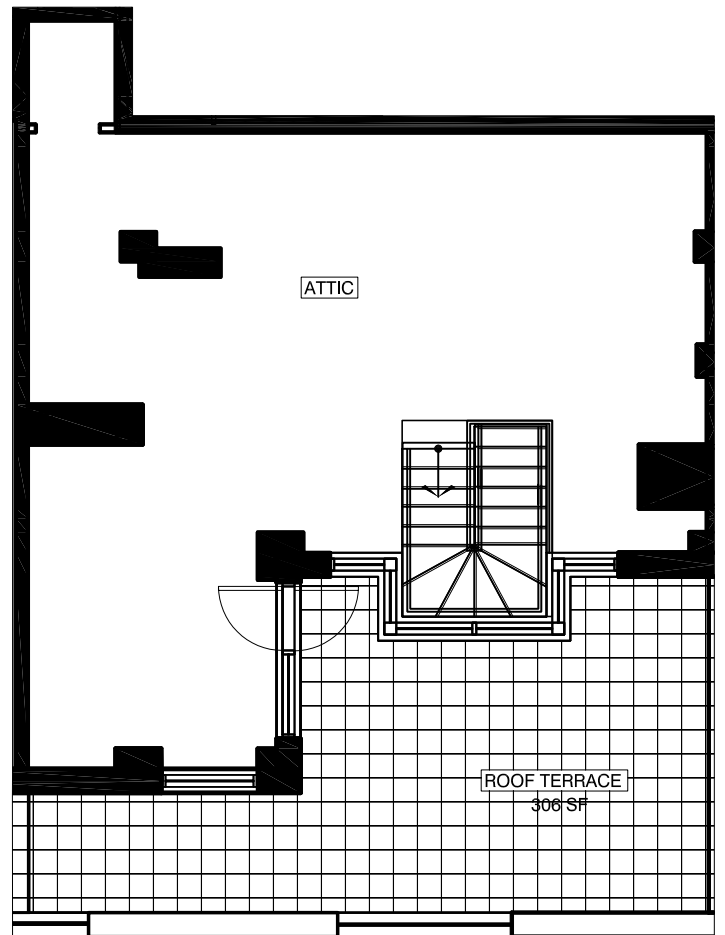
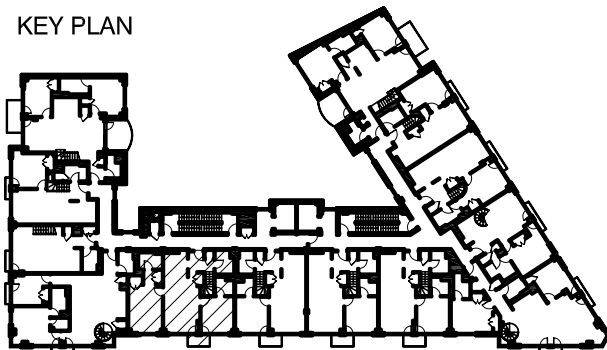


All dimensions are approximate and subject to normal construction variances and tolerances. Dimensions are maximum overall, subtract cut-outs

We reserve the right to make changes due to unforeseen conditions, in accordance with the offering plan

Area calculations are taken from the exterior of exterior walls and to the center of demising walls.

KEY PLAN



ATTIC