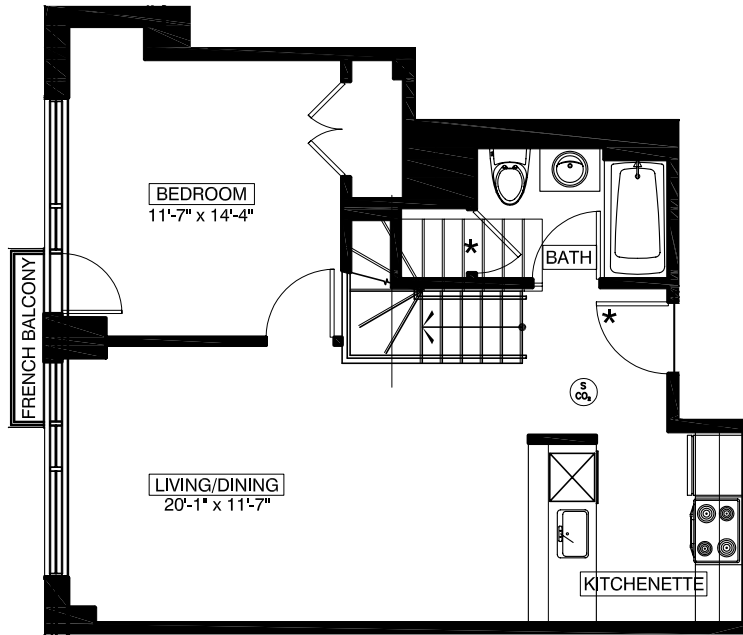


65 AINSLIE STREET BROOKLYN, NEW YORK

512
1 BEDROOM
1 BATHROOM
ATTIC

FLOOR NUMBER	APARTMENT AREA
5	634 SQ.FT.
ATTIC	483 SQ.FT.
TOTAL	1117 SQ.FT.

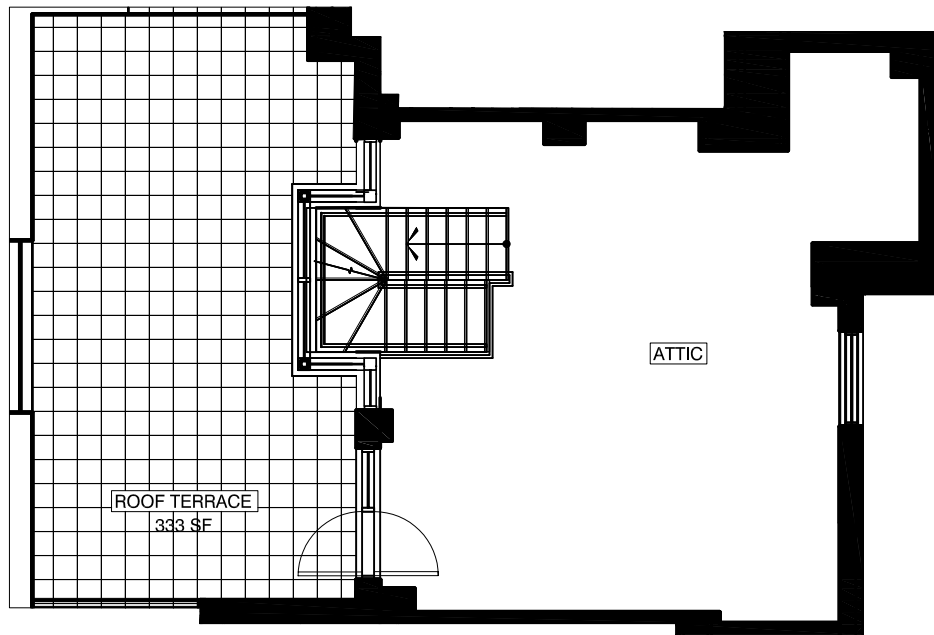


4TH FLOOR

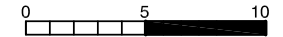
AREA OF BALCONIES
 13 SQ. FT.
 AREA OF TERRACES
 333 SQ. FT.

All dimensions are approximate and subject to normal construction variances and tolerances. Dimensions are maximum overall, subtract cut-outs

We reserve the right to make changes due to unforeseen conditions, in accordance with the offering plan



ATTIC



Area calculations are taken from the exterior of exterior walls and to the center of demising walls.

KEY PLAN

