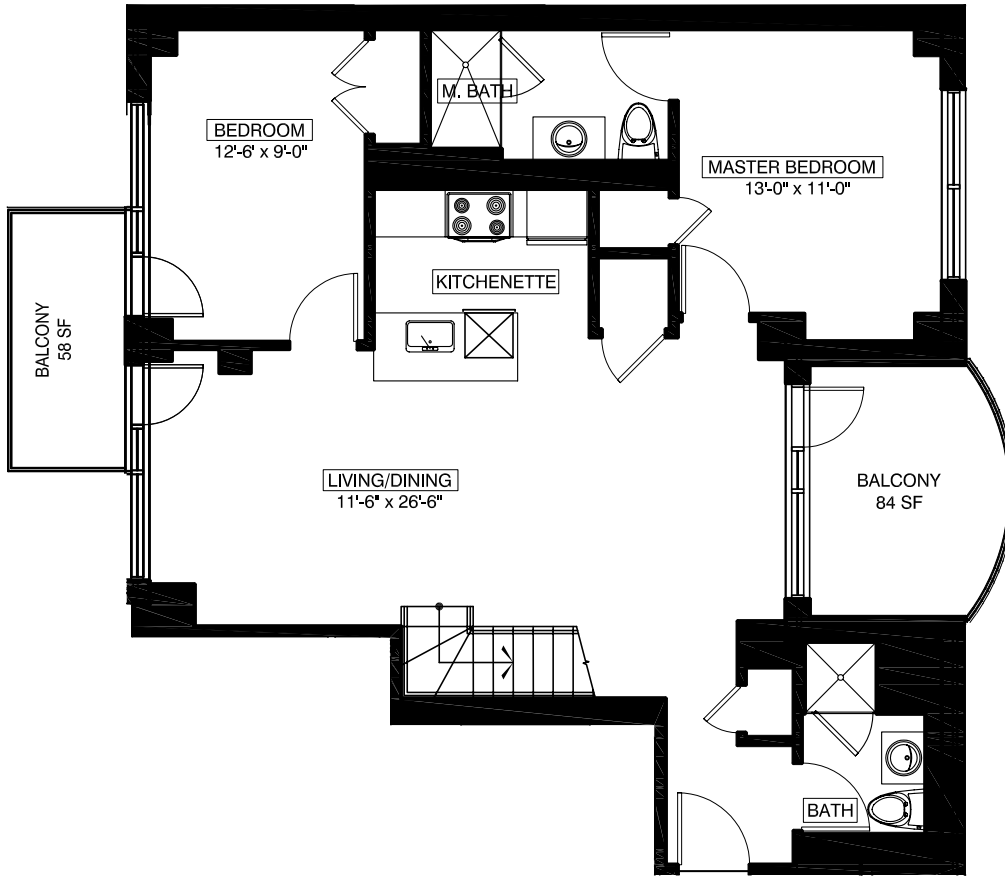


65 AINSLIE STREET BROOKLYN, NEW YORK



4TH FLOOR

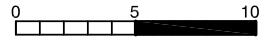
513
2 BEDROOMS
2 BATHROOM
ATTIC

| FLOOR NUMBER | APARTMENT AREA |
|--------------|--------------------|
| 5 | 1008 SQ.FT. |
| ATTIC | 391 SQ.FT. |
| TOTAL | 1399 SQ.FT. |

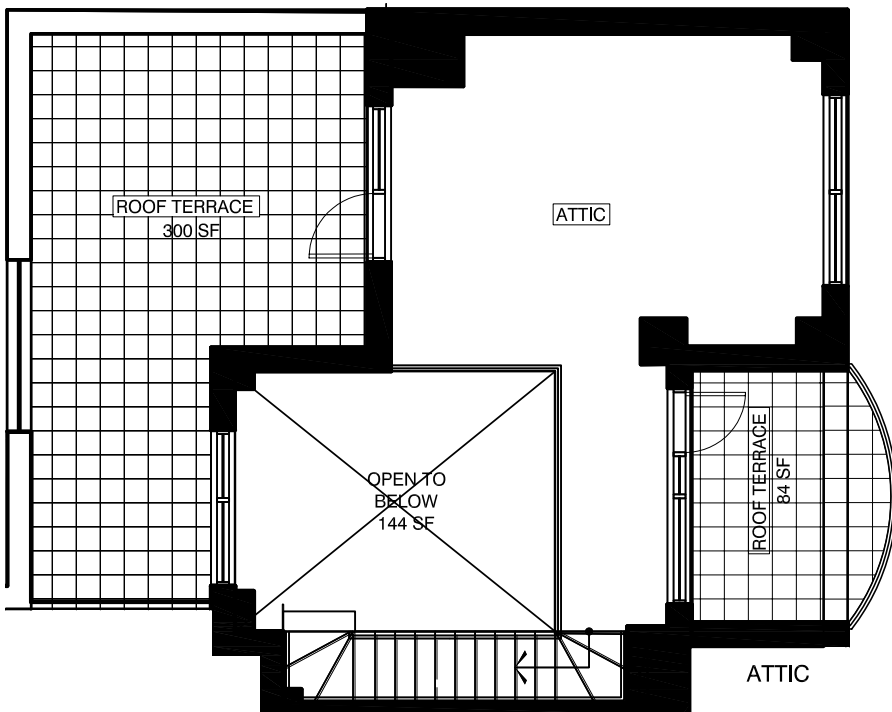
AREA OF BALCONIES
 142 SQ. FT.
 AREA OF TERRACES
 384 SQ. FT.

All dimensions are approximate and subject to normal construction variances and tolerances. Dimensions are maximum overall, subtract cut-outs

We reserve the right to make changes due to unforeseen conditions, in accordance with the offering plan



Area calculations are taken from the exterior of exterior walls and to the center of demising walls.



ATTIC

KEY PLAN

